

Tool holder

The tool holders bring order and overview into the workstation. These holders can be used in the perforated boards shown on page 18.

Shock- and scratch resistant plastics coating, base plate thickness 1.5 mm, aluminium coloured.

With inclined hook-end, L=50



Code No.
WAC042000097

Grab container - holder



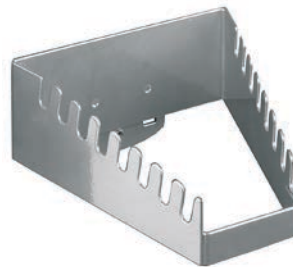
Code No.
WAC042000104

Double, with inclined hook-end, L=50



Code No.
WAC042000098

Wrench holder, 8 times



Code No.
WAC042000101

Magnetic holder, D=40



Code No.
WAC042000099

Hexagon socket wrench holder, D=1-11



Code No.
WAC042000102

Pliers-holder, B=55/T=20



Code No.
WAC042000100

Machine holder, D=60



Code No.
WAC042000103

Shelf board, B=350, T= 125



Code No.
WAC042000105

Bench vice

Bench vice with milled and surface-hardened clamping jaws, the hardened keyway is adjustable. It has a dimension scale for fast pre-setting of the clamping jaws. The vice is equipped with a large hardened anvil face for alignment and upset works.

Jaw width: 120 mm

Gewicht: ca. 10 kg



Code No.	Type
WAC042000031	vice
WAC042000164	mounting kit