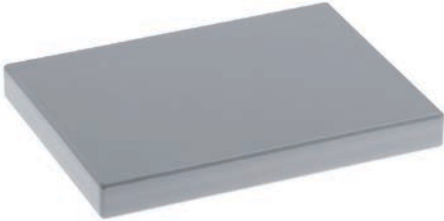


Table top

Different materials can be selected for the table top depending on the field of application.



Chipboard coated

Decorative, plastic coated, easy to clean, with edge banding



Beech-multiplex top

High payload and bending strength, can be machined well

Code No.	Type	Thickness	Standard size	max. size	Weight [kg/m ²]
WAC042000006	coated chipboard (melamine), light grey	22 mm	1200x800, 1600x800, 2000x800 mm	1200x2000 mm	13,5
WAC042000005	coated chipboard (HPL), light grey	23 mm			15,0
WAC042000143	oiled multiplex board, beech	30 mm			23,0
WAC042000007	oiled multiplex board, beech	40 mm			30,0
WAC042000087	ESD-protective table top map	2 mm	900 x 610 mm	-	-
WAC042000088	ESD-protective table top map	2 mm	1220 x 610 mm	-	-

Further versions are available on request. Cut to size according to customer specifications.