

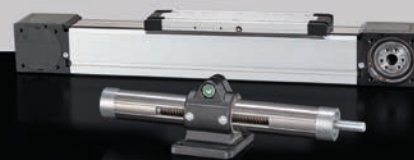
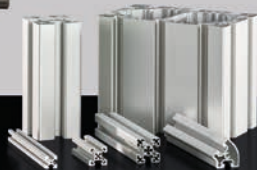


RK ROSE+KRIEGER

A Phoenix Mecano Company

RK Product overview

Components and system solutions
for automation technology



Connecting Technology



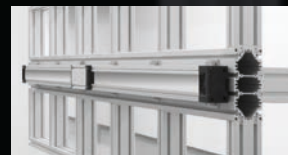
Profile Technology



Linear Technology



Modular Technology



RK Product overview

We are ...

... a subsidiary of the globally-active Phoenix Mecano AG, and a full-service provider offering a wide range of linear components, profile assembly technology, connecting and modular technology, which is unique in the market. Decades of experience and our application expertise in various industry sectors means that we are a competent partner. We are focussed on your needs, from the initial contact to delivery. Individual advice and rapid delivery are not mutually exclusive, but rather both result from our determined focus on customer needs.

This guide provides an overview of the full range offered by RK Rose+Krieger.
We look forward to working successfully with you.

Save yourself
a long search.
We have
what you are
looking for.





We offer

- A broad, integrated product range
- 40 years of application experience in a wide range of fields
- Competent advice on your project
- Creative ideas for your individual solutions
- Quality, because we keep our promises

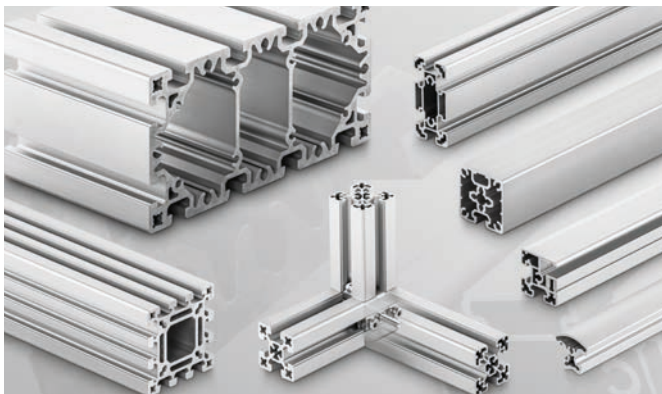
Our products



CONNECTING TECHNOLOGY

- Reliable connections between round and square tubes
- Connecting elements made of aluminium, steel, stainless steel and plastic
- Sizes from 8 mm to 80 mm

Benefit
from our
systematic
product
variety



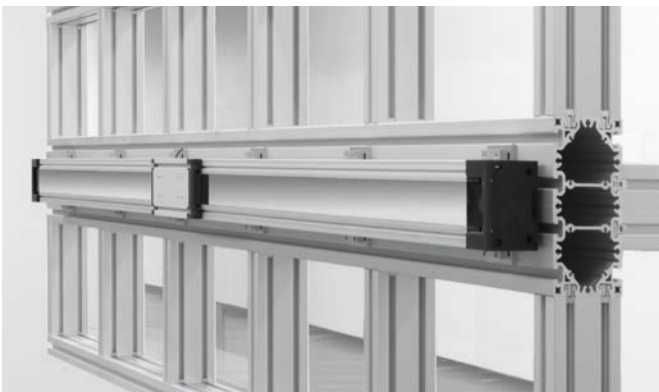
PROFILE TECHNOLOGY

- The proven BLOCAN® aluminium assembly system with profiles of
- 20 mm to 320 mm for diverse applications
- Connection technology with a unmatched combination of flexibility and reliability



LINEAR TECHNOLOGY

- Manual adjustment units
- Electrical cylinders
- Lifting columns
- Linear actuators
- We move up 3 tons over 12 metres
precise, dynamic and reliable



MODULAR TECHNOLOGY

- We develop, manufacture and install for you
- Machine frames
- Workplaces
- Protective enclosures
- Multidimensional linear actuator modules
- Complete drive solutions

CONNECTING TECHNOLOGY

Clamp and release

Connecting precision round and square tubes reliable and stable whilst also making releasing easy appears to be a difficult task. The RK connecting technology, which has been proven over years of use, meets this requirement in a simple and almost perfect fashion.

Our versatile connection elements offer you the chance to implement creative and flexible solutions, because you can rely on our product. We are sure to have the right part for you, and if not we will develop one especially.

Save yourself
welding,
blasting,
pickling,
sweating.





Application: labelling with RK connecting parts

Reliable due to

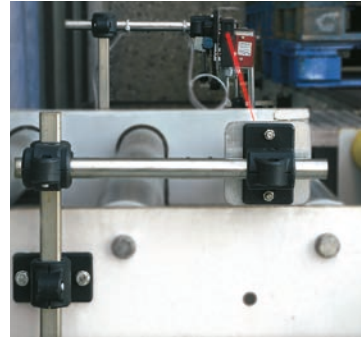
- Stable, releasable and reusable connections
- For round/square tubes from 8 mm to 80 mm
- No machining or welding required
- Parts made of aluminium, stainless steel and plastic for versatile applications
- short delivery times, often of the shelf

CONNECTING TECHNOLOGY

Application examples

Light Clamps – Light load range

- Easy
- Good value
- Variable



Solid Clamps – Medium to heavy load range

- Reliable
- Solid
- Price/Performance optimised
- Great variety



Robust Clamps – Shock-proof load range

- Extremely strong
- Vibration proof
- Impact and shock load
- Corrosion resistant



Monitor Mounting/Support arms system

- Universal or VESA connection
- Rotary or swivel function
- Monitor holder/support arm suitable for combination
- Excellent value for money



ITAS – Industrial stairs and working platforms

- Simple plug-in principle
- No machining, just assembling
- Straight transitions
- Optically attractive aluminium design



PROFILE TECHNOLOGY

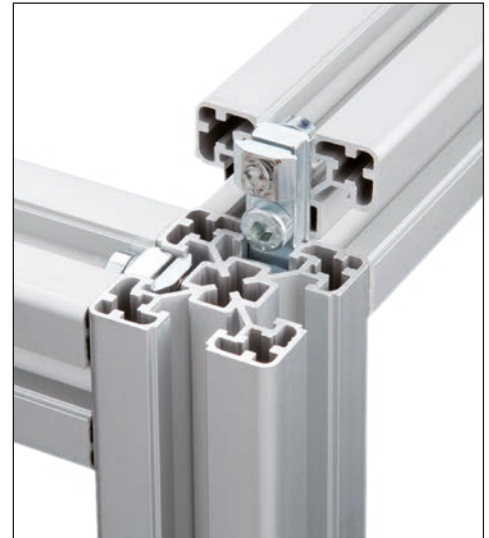
Mix and match

What matters is not only the profile, it is also the connection between the profiles. Years of application experience have resulted in an industrial aluminium profile system which can meet almost any requirement. Unlimited creativity combined with the highest levels of flexibility and proven reliability offers you multiple possible solutions to your requirements.

Benefit from all the advantages, especially connection without machining being required.

The success of a system is the sum of its parts, based on strong individual parts.

Save
yourself the
drilling -
there's no
need for it!





Application: transportation and handling using BLOCAN® frames

Use the system to gain savings

- Combine, assemble, modify
- Highest levels of variability, without requiring machining
- Reliable thanks to connection technology which has been proven over years („Permanently stable“)
- Wide range of standard profiles from 20 mm to 320 mm, often available of the shelf
- Available as standard parts or cut to length (labelled, ready for installation)

PROFILE TECHNOLOGY

Application examples

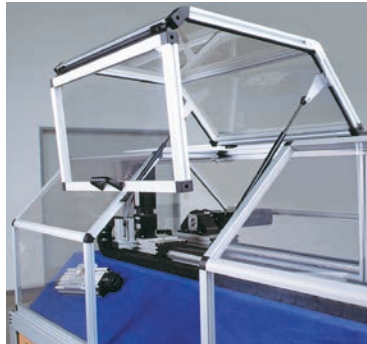
Structural Profiles – Stable versatile structures

- Fixing slots on all sides
- Unlimited applications
- Minimized design effort
- Cost optimisation



Functional Profiles – Additional visual and functional benefit

- Attractive design
- Many additional
functions
- Flexible



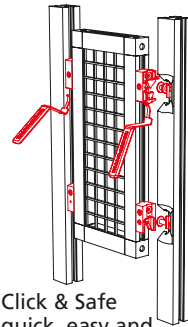
Heavy Duty Profiles – Heavy duty with highest stability

- High dynamic
- Large structures
- Easy transportable



Protection and partitioning system

- Sturdy protection system in aluminium design
- Minimum of designing efforts thanks to standard modules
- Assembly with no need for machining
- Extensive accessory programme
- Conform to the new European Machinery Directive 2006/42/EC and EN ISO 14120:2015 (D)



Click & Safe
quick, easy and
reliable connections



Profile connection technology

Minimum effort,
low preparation/installation costs

- Machining of profiles is not necessary
– no additional costs, no shavings
- Supplementary moving, of mounting position is possible
- Minimum preparation effort
– order and install



LINEAR TECHNOLOGY

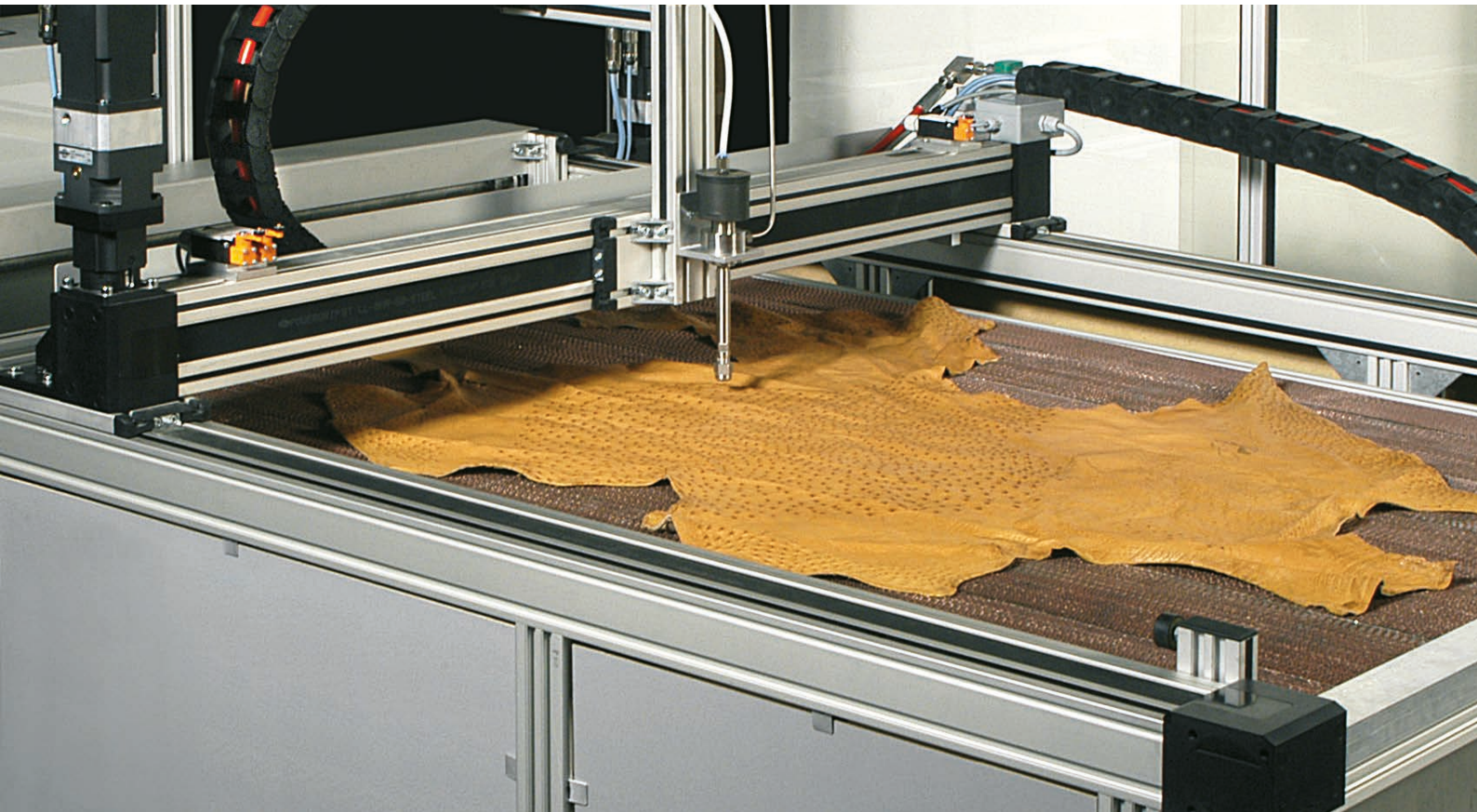
Moving and positioning

Guiding, adjustment, positioning or uniform motion, the requirements for linear motion operations are as numerous as the solutions. We offer you a wide spectrum of linear motion components, starting with an occasional manual movement, as well as frequent operation, through to continuous high dynamic positioning.

We will be pleased to advise you and help you select the best solution for your application. If this is not enough, we will develop a new optimal solution with you.

Reliable
positioning
saves much
trial and error.





Application: cutting leather and plastic components for the automobile industry

Performance = Power x Speed

- From 1 kg to 3 tons
- Up to 10 m/s and 50 m/s²
- From 100 mm to 12 m
- Easy integration of all current servomotors
- Highly reliable in constant use under various environmental conditions

LINEAR TECHNOLOGY

Application examples

Move-Tec –
Width, length and
height adjustment

- Manual or electric drive
- Occasional to multiple adjustments daily
- Low duty cycle
- Low speed
- Medium to high stability



Place-Tec –
Loading and unloading,
palletising, pick & place

- High repeatability
- Short cycle times
- High cycle rates
- 3 shift operation
- High reliability



Control-Tec –
Numerically controlled
positioning applications

- High positioning accuracy
- Uniform motion
- High drive stiffness
- 3 shift operation
- IP 40 protection class



Lifting columns

Height adjustment made easy

- Workplace ergonomics
- Industrial automation
- Medical technology
- Media technology



Electric cylinder

The alternative to pneumatic/hydraulic cylinders

- Fully integrated technology / maintenance-free
- Self-locking, even under max. load
- Can be installed in any position
- Various stroke lengths and speeds



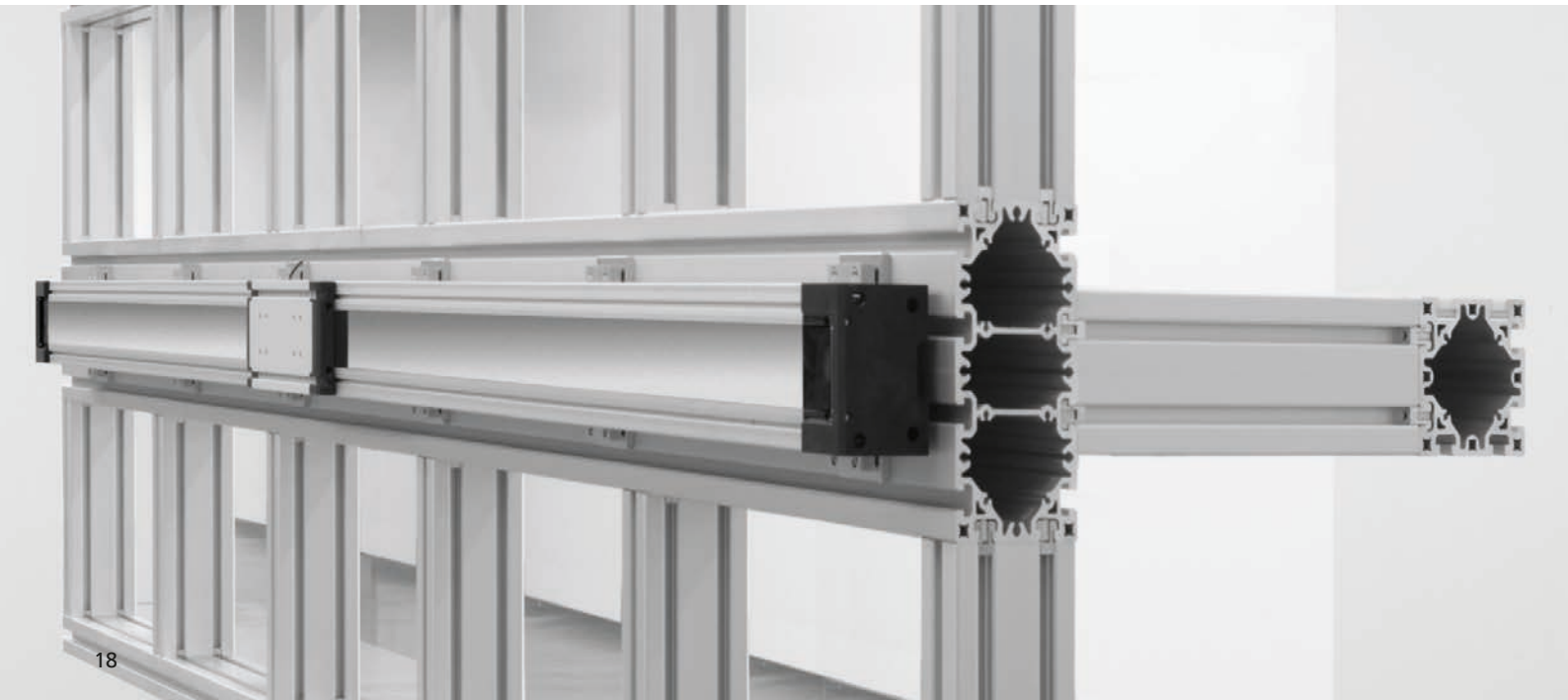
MODULAR TECHNOLOGY

Advise and optimise

Automation is as versatile as people are. Each task requires its own solution. Of course you can reinvent the wheel, a ball bearing, a motor or a linear actuator module if you have the time and the necessary expertise.

But you could also concentrate on the task in hand and work together with the right competent partner. We offer you our experience and expertise, so that together we can achieve success.

Cooperation
achieves
clever
savings.





Application: loading and unloading a manufacturing cell

Motivated men make modules

- Advice, design, assembly and installation by a full-service provider
- Linear movement tasks
- Machine frames, workplaces and safety guards made of aluminium profiles
- Releasable connecting solutions made of aluminium, steel, stainless steel and plastic
- Customer-specific automation modules

MODULAR TECHNOLOGY

Application examples

Workstation systems –
Ergonomics reduce stress and absences

- RK Easywork standard workbenches
- Adaptation based on LEAN considerations
- Suitable for modular upgrade



LEAN solutions –
Innovative process structuring
– Efficient sequences

- One piece flow work stations
- Material/feed carriage
- Best-point positioning
- Consultancy, conceptualisation, implementation



Customised system solutions –
everything from a single source

- Multiple axis and handling systems
- Machine housings
- Workstation systems
- Frames and equipment
- Pedestals and stair systems
- And much more

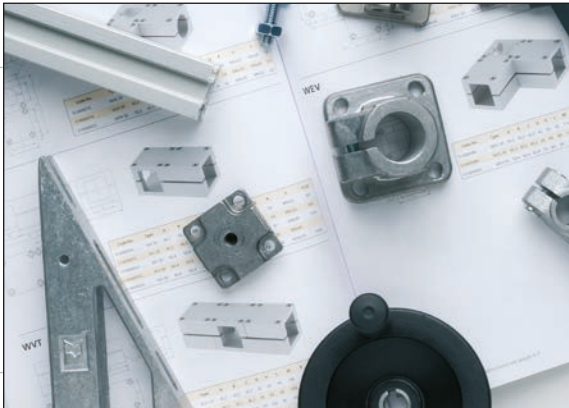




RK Product overview

You decide...

100%



0%

Catalogue items

If you know what you want and have the time,
select what you need from our standard range.



Variations, modified standard parts

You benefit from our experience and allow
our experts to recommend the optimal
modified product for your needs.



RK ROSE+KRIEGER



Customer-specific developments

If you want something no one has had before, we will be happy to develop something new for you.



Modules and systems

You need your skills and time for other tasks and choose a partner you can rely on.

So that you
achieve the
maximum
„profit“.

... how much we can do for you



RK ROSE+KRIEGER

A Phoenix Mecano Company

RK Rose+Krieger GmbH
Connecting and Positioning Systems
Potsdamer Straße 9
32423 Minden, Germany
+49 571 93 35-0
info@rk-online.de
www.rk-rose-krieger.com



Contact person

EN 500 Flyeralarm MAR 10 71 15 0000 05/2023 Printed in Germany